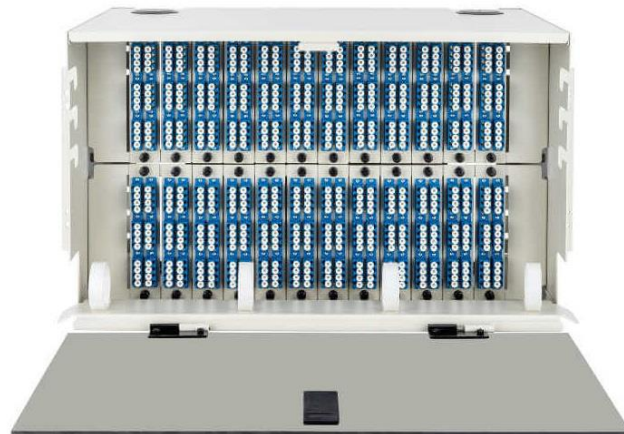


AFRM6R-24

Rack Mount FDP



FEATURES

- For Indoor Rack Mount Applications
- Powder Coated 16 Gauge Cold Rolled Steel (Beige or Black)
- Accommodates up to 288 Splices
- Bulkhead Panel for up to 288 SC Simplex/LC Duplex Adapters (SC Footprint)
- Integrated Cable Management
- Removable Acrylic Front Door

The AFRM6R-24 provides protection for fiber optic terminations and splices. The enclosure is equipped with 4 ports for cable entry. The enclosure accommodates (24) LGX style adapter plates and can be configured to house up to (288) SC footprint adapters and 288 splices when equipped with splice trays. The AFRM6R-24 is available fully loaded as a patch only, patch and splice, or can be equipped with a pre-terminated stub cable per the customer's specifications. The enclosure is configured for 19" racks but reversible mounting brackets allow quick conversion for 23" racks.

SPECIFICATIONS

Model	AFRM6R-24
Dimensions	10.5"h X 17"w X 12"d
Material	16 Gauge Cold Rolled Steel
Maximum Termination Capacity	288 SC or 576 LC (Patch Only)
Splice tray Capacity When Equipped	288 Splices

ACCESSORIES

SC Simplex SM Adapter, Blue	AFAD2F2F
SC/APC Simplex SM Adapter, Green	AFAD5F5F
LC Duplex SM Adapter, Blue	AFAD4F4F-DU-SC
LC Duplex MM Adapter, Aqua	AFAD4F4F-DU-10G-SC
LC/APC Duplex SM Adapter, Green	AFAD4F4F-DU-SCI
SC Simplex MM Adapter, Beige	AFAD2F2F-MM
LC Duplex MM Adapter, Beige	AFAD4F4F-DU-MM-SC